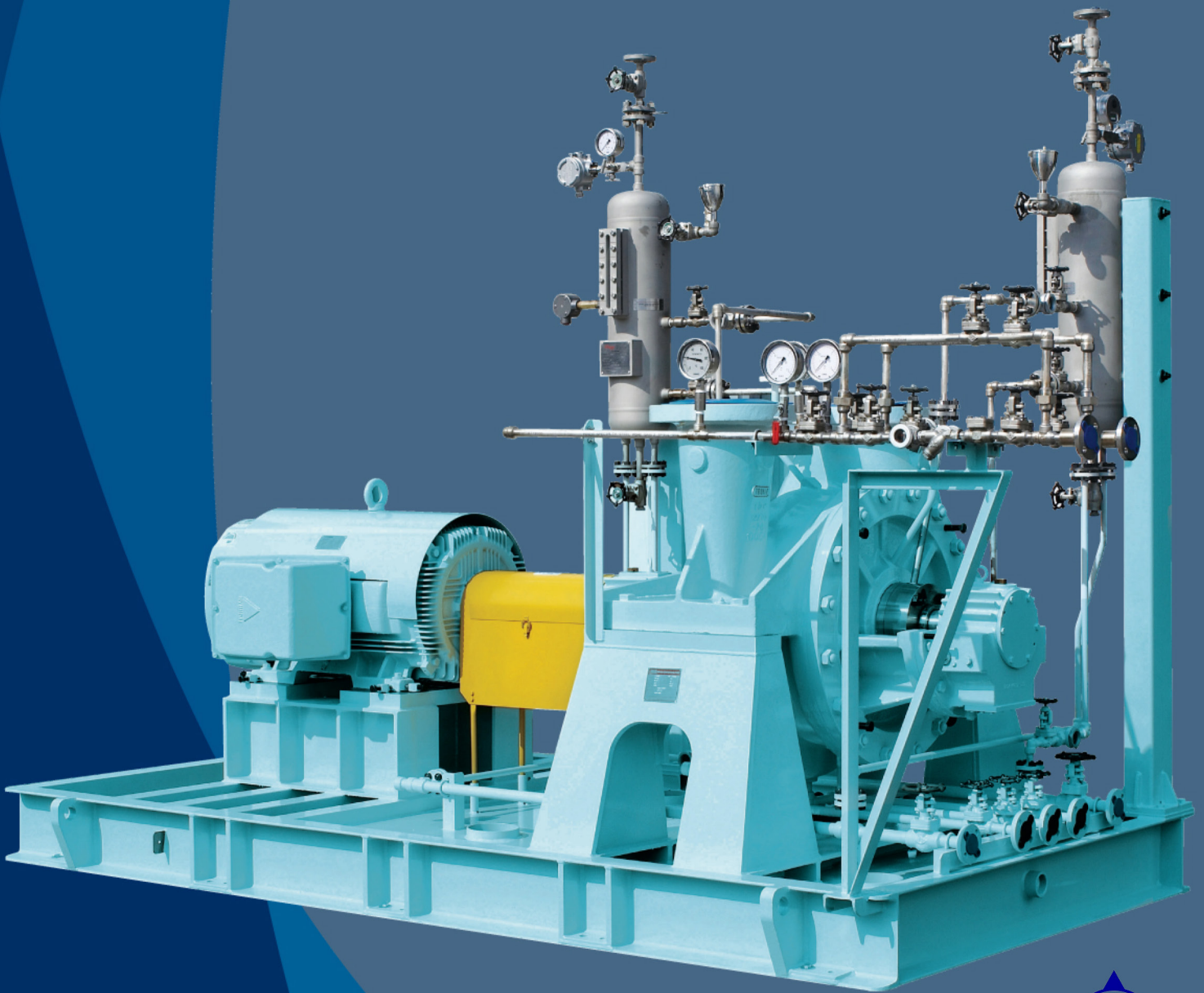


API 610, 11th Ed. Single Stage Double Suction Pump (BB2)

# TDP Series



API 610, 11th Ed. Single Stage Double Suction Pump (BB2)



**TRUFLO**  
QUALITY • VALUE • SERVICE

# TDP SERIES

## API 610, 11th Ed. Single Stage Double Suction Pump (BB2)

- Max.Capacity :  
8000m<sup>3</sup>/h (35200GPM)
- Max.Head : 340m (1120ft)
- Temperature : 400°C (13520°F)
- Allowed Pressure :  
60kg/cm<sup>2</sup> (850psi)
- Power : 2500kw (3350HP)
- Material : DCI, WCB, CF8, CF8M, CD4M, CN7M, HASTELLOY B&C, CA6NM, CF3M
- Back pull-out design for easy maintenance.
- Centerline mounted for high temp service.
- Between bearings design for improving rotor stability.

Truflo pumps is providing pumping solutions allowing its customers to continuously improve productivity, profitability and pumping system reliability.

### API 610(BB2) Radially Split, Double Suction Process Pump

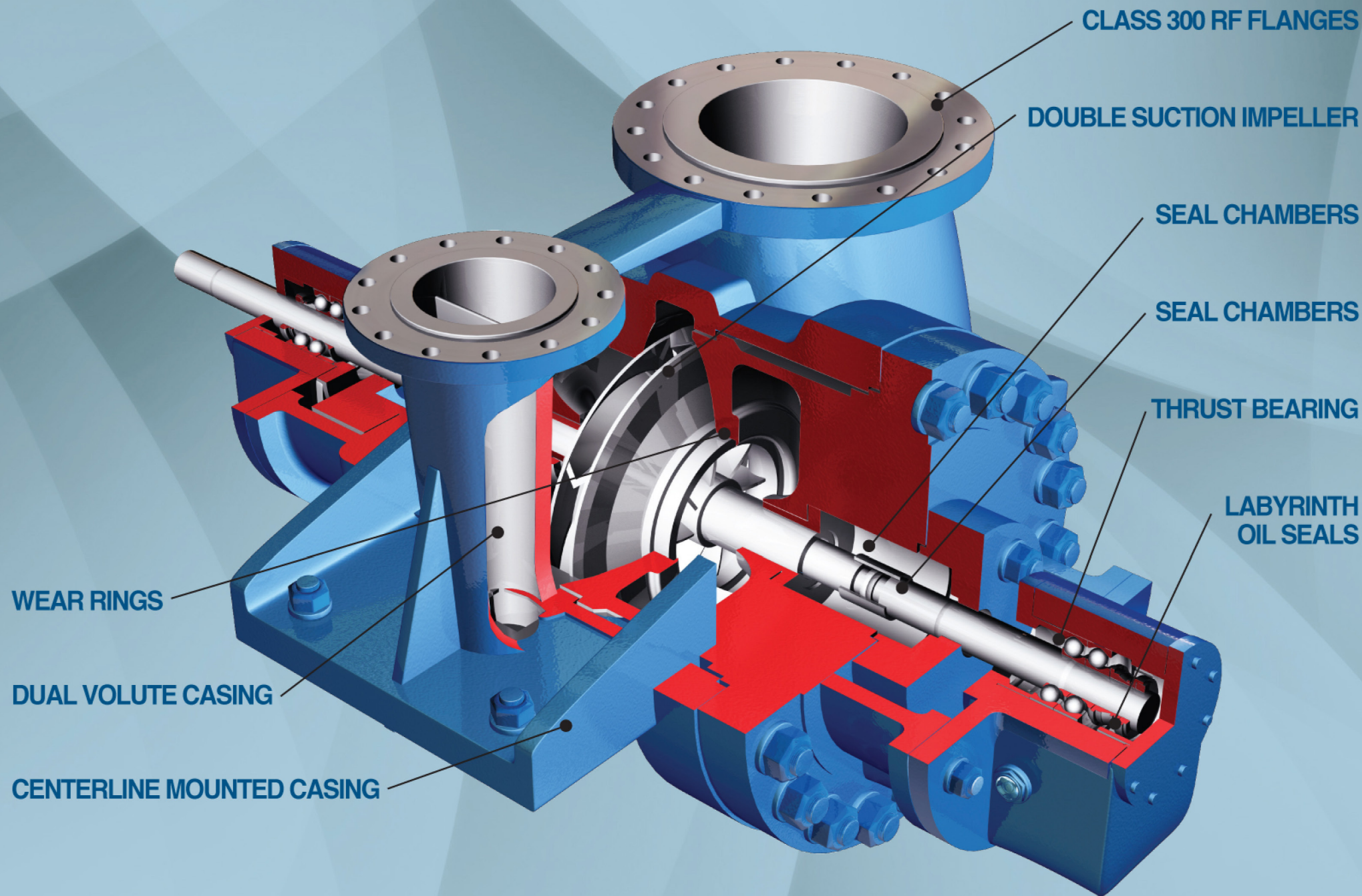
The TRUFLO BB2 pump meets requirements of API 610, 11<sup>th</sup> Ed. (BB2)

It is engineered and built for reliable, safe performance at the elevated temperatures and pressures experienced in refining and power applications.

## APPLICATION

- Petroleum refining, production and distribution
- Petrochemical and heavy-duty chemical processing
- Gas industry services
- Boiler-feed booster and other high temperature services
- Water and general industrial





**CLASS 300 RF FLANGES STANDARD**

Other classes and facings optional.

**HEAVY DUTY SHAFT**

Minimum shaft deflection for extended seal and bearing life. Sized to meet requirements of API610.

**RENEWABLE WEAR RINGS**

API 610 clearances. Positively locked. Standard feature.

**CENTERLINE MOUNTED CASING**

Heavy duty mounting extensions accept API 610 nozzle loads and maintain pump alignment under extreme service conditions.

**DOUBLE SUCTION IMPELLER**

Designed for low NPSH services. Hydraulically designed to balance axial loads for increased bearing life.

**DUAL VOLUTE CASING**

Evenly balances radial forces for minimum shaft deflection, increased bearing, and seal life.

**RADIALLY SPLIT CASING**

Designed specifically for high pressure/ high temperature services. Fully confined controlled compression gasket assures leak-proof sealing.

**ENLARGED SEAL CHAMBERS**

Conform to API 610 dimensional requirements. Allows use of wide range of API 682(ISO 21049) cartridge mechanical seals to meet specific service conditions.

**CASING HEAD ON OUTBOARD END**

Allows removal of rotor without disturbing driver or suction and discharge piping.

**HEAVY DUTY THRUST BEARING**

Duplex 40° angular contact thrust bearings and deep-groove radial bearings.

**LABYRINTH OIL SEALS**

Labyrinth seal design prevents oil from leaking out and contaminants from intruding. Made from non-sparking metal.

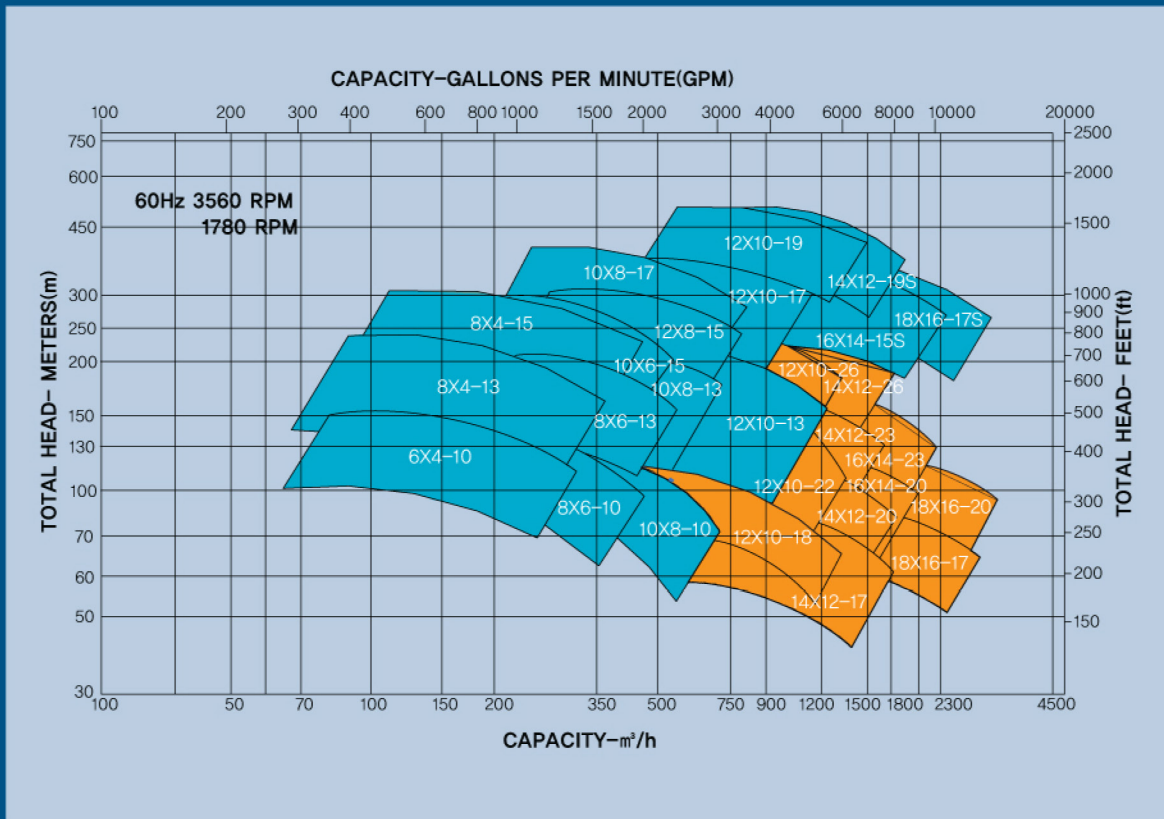
**API 610, 11th Ed.**

**Single Stage Double Suction Pump (BB2)**

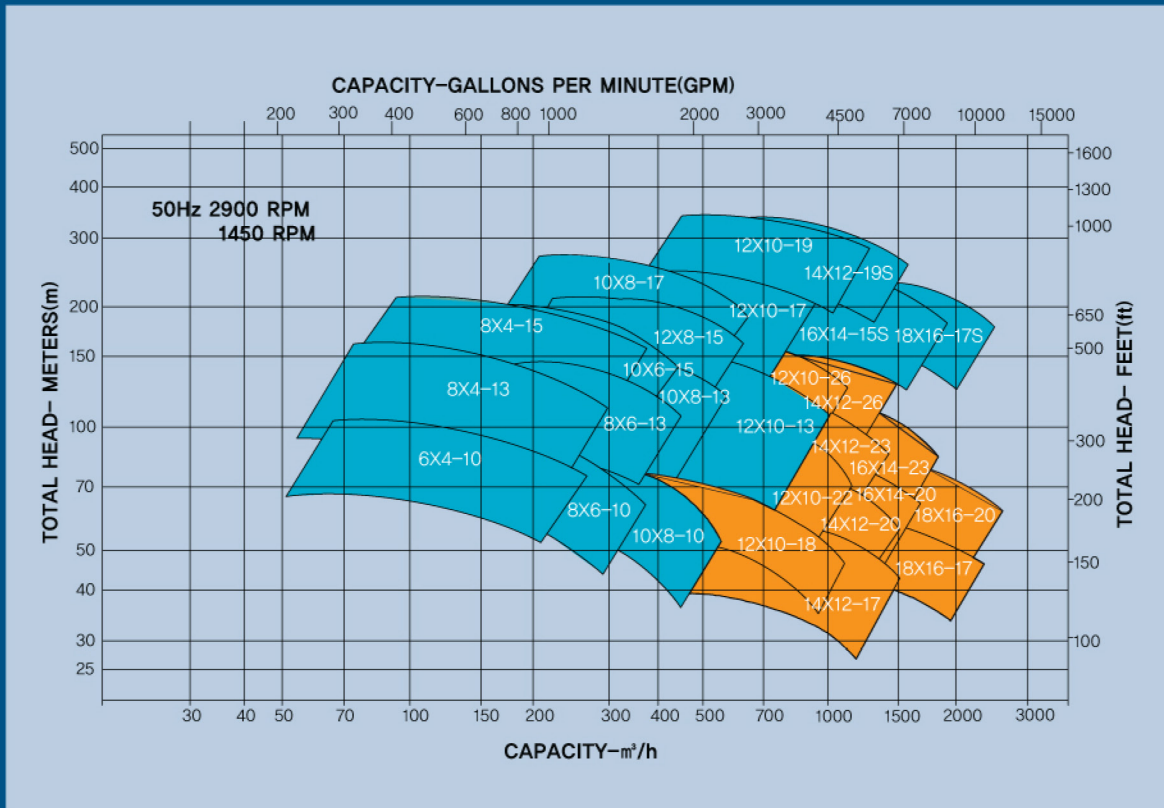


# PUMP SELECTION GUIDE

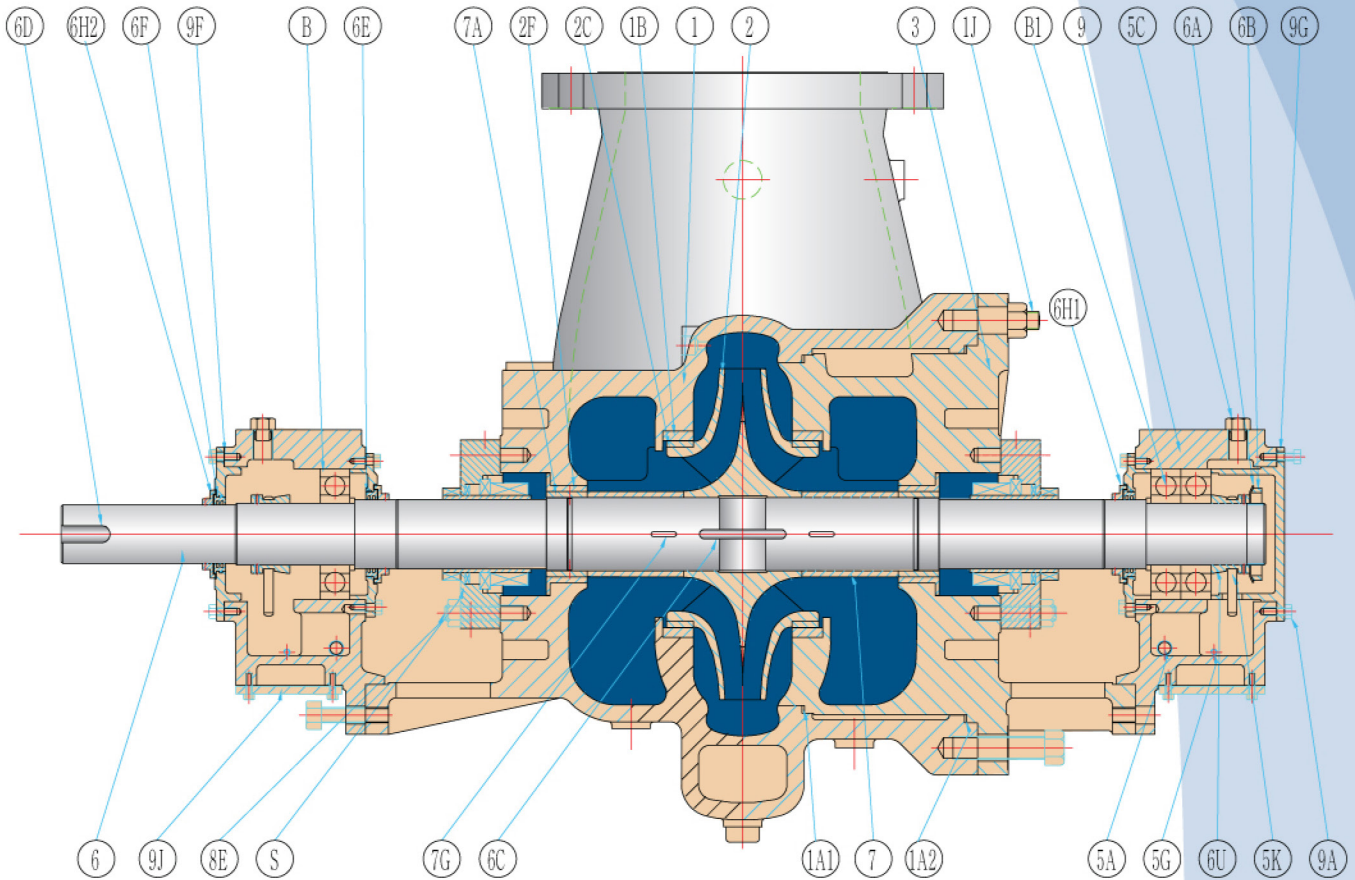
## 3560/1780 RPM (60Hz)



## 2900/1450 RPM (50Hz)



# SECTIONAL



NO	PART NAME
1	CASING
1A1	GASKET(CASING-IN)
1A2	GASKET(CASING-OUT)
1B	WEARING (CASING)
1J	STUD (CASING)
2	IMPELLER
2C	WEARING (IMPELLER)
2F	THROAT BUSH
3	ENDCOVER
5A	OILER
5C	OIL CAP
5G	OIL DRAIN PLUG

NO	PART NAME
5K	OIL RING
6	SHAFT
6A	LOCK WASHER
6B	LOCK NUT
6C	IMPELLER KEY
6D	COUPLING KEY
6E	LABYRINTH SEAL-IN
6F	LABYRINTH SEAL-OUT
6H1	DEFLECTOR-IN
6H2	DEFLECTOR-OUT
6U	RELEASE COOLER
7	SLEEVE

NO	PART NAME
7A	SLEEVE NUT
7G	SLEEVE KEY
8E	STUD (SEALCOVER)
9	BEARING HOUSING
9A	HEXBOLT
9F	BEARING COVER-OPEN
9G	BEARING COVER-CLOSE
9J	JACKET(B/HOUSING)
9JA	JACKET BOLT(B/HOUSING)
9JB	GASKET (B/H-JACKET)
B1	BEARING OUT
B	BEARING
S	MECHANICAL SEAL

## Truflo Pumps, Inc.

7105 Cessna Drive  
Greensboro, NC 27409

Ph: (336) 664-9225  
Fax: (336) 664-1353

E-Mail: Sales@TRUFLO.com  
Website: www.TRUFLO.com