



TRUFLO[™]
QUALITY • VALUE • SERVICE



**A New Vision
for Quality Pumps**

TSP
Series

*API 610 Process Pump
11th Edition*

TSP Series

API 610 Process Pump, 11th Edition

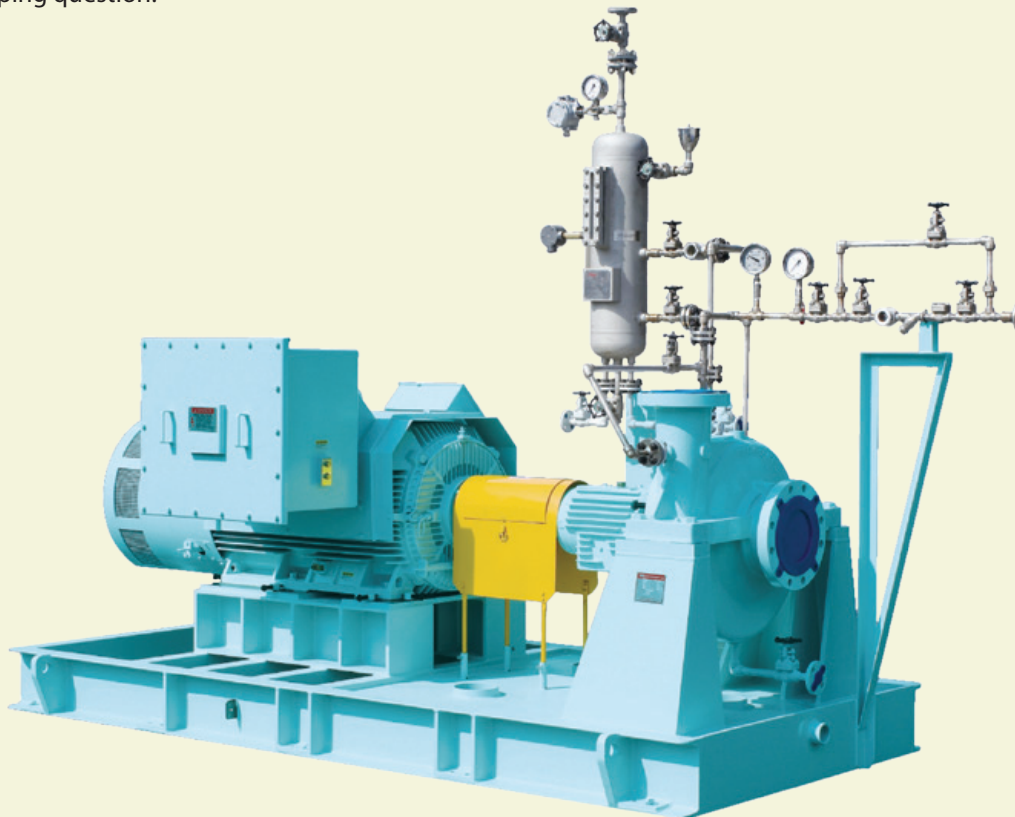
The **Truflo TSP Series** pump is the new standard for worldwide process needs. From the petroleum to the power and mining industries, all customers will come to see why the **TSP Series** overhung pump adds value, reliability and safety at user facilities. A wide range of applications and options, including inducers for low NPSHa systems, show why the **TSP Series** is an industry leader. The **Truflo TSP Series** also comes standard with many options not available from other industry leaders, including all investment casted enclosed impellers. Available in 33 sizes and casing configurations, all material combinations and better than industry standard deliveries, let the **Truflo TSP Series** be your answer to you next pumping question.

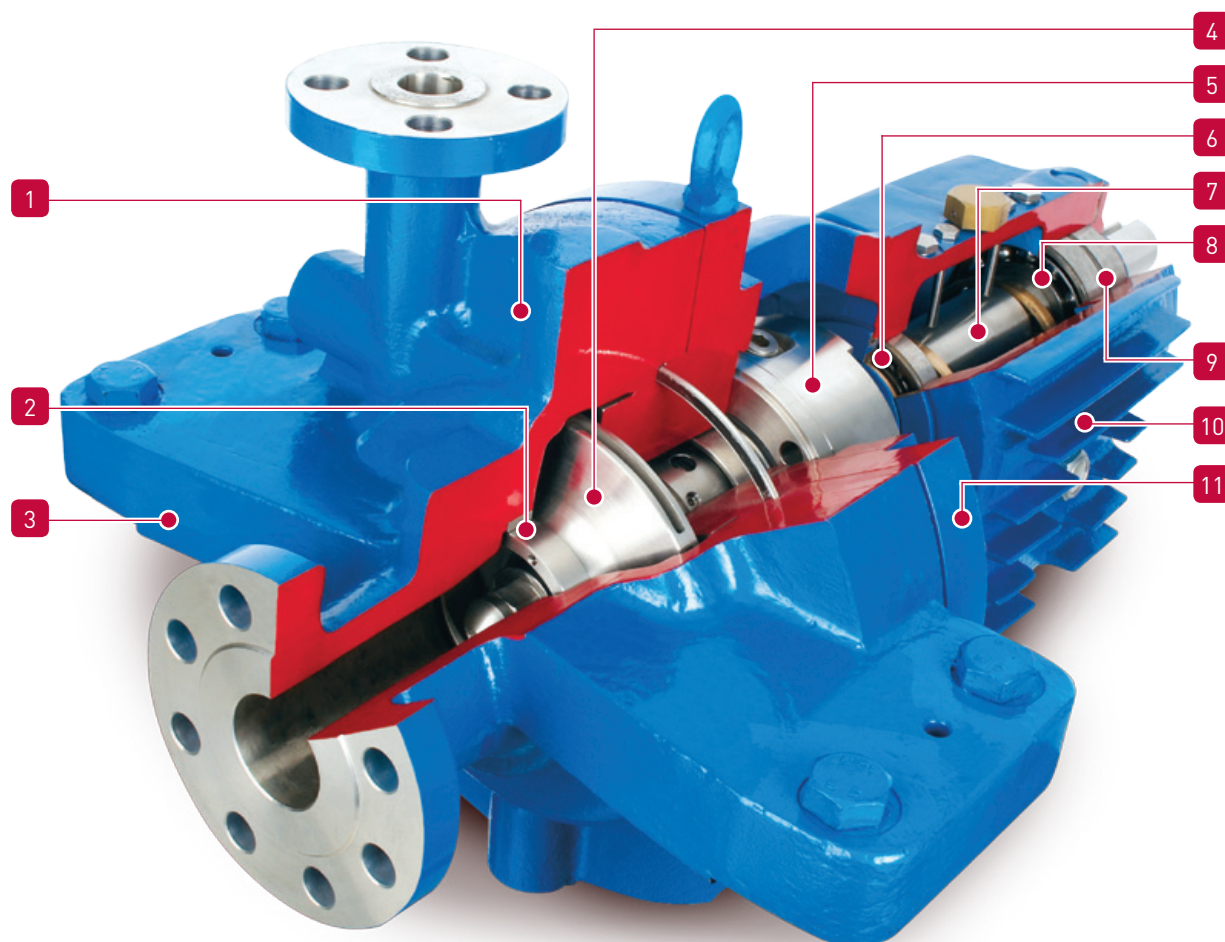
FEATURES

- ⚙️ API 610 11th Edition compliant
- ⚙️ 33 sizes available
- ⚙️ Maximum capacity: 8,365 gpm
- ⚙️ Enclosed impeller (investment casting)
- ⚙️ Excellent interchangeability
- ⚙️ 1,200 psi maximum allowable working pressure
- ⚙️ Standard double volute on greater than 3" suction

APPLICATIONS

- ⚙️ Oil and gas production
- ⚙️ Refining and pipeline
- ⚙️ Power generation
- ⚙️ Mining





1. CASING

- Designed to meet API 610 11th edition.
- Standard 300# RF flanges.
- Tangential discharge for hydraulic efficiency.
- Standard dual volute design for 3 inch discharge or larger.

2. RENEWABLE WEAR RINGS

3. CASING & CENTERLINE MOUNT SUPPORT

- Designed to meet API nozzle load criteria.

4. IMPELLER

- Standard enclosed impeller for high efficiency.
- Investment casting for better efficiency and low NPSH characteristic.
- Balance grade: ISO G1.0.

5. SEAL CHAMBER

- Designed to meet API 610 & API 682 standards.

6. DEFLECTOR & LABYRINTH OIL SEAL

- Standard deflector & labyrinth oil seal applied with non-sparking material.

7. SHAFT

- Heavy duty shaft design guarantees minimum shaft deflection and maximum bearing and mechanical seal life.

8. OIL RING

- Standard oil ring provides better bearing lubricating condition.
- Other configurations available.

9. BEARING

- Duplex angular contact thrust bearings and deep-groove radial vbearings to meet API 610 requirements.

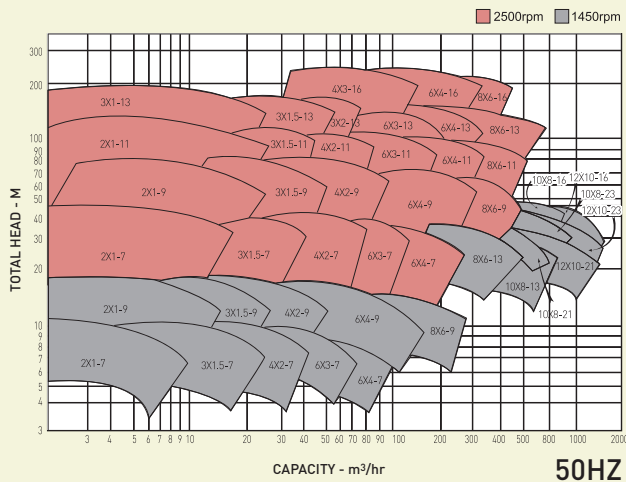
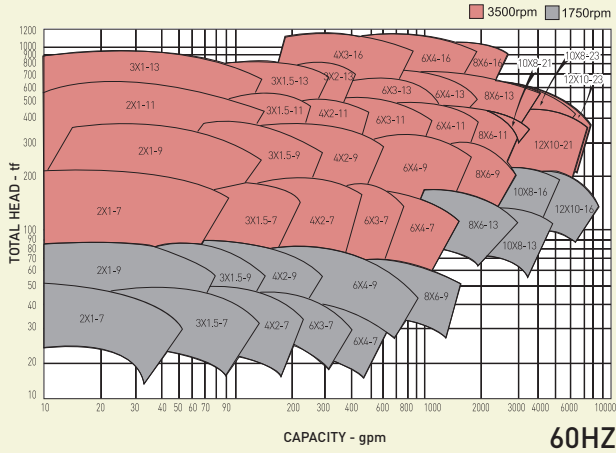
10. FINNED FRAME

- Standard cast finned frame provides natural air cooling.
- Optional cooling fan improves the cooling condition.

11. BEARING FRAME

- Rigid design provides better vibration characteristics.
- 3 bearing frames cover all TSP models.
- Metal to metal fits provide runouts and concentricities well within API 610 limits.

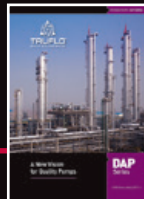
Performance Curves & Dimensions



| Group | Pump size | Nozzle Size | | A | L | C | H1 | H2 | B |
|-------|-----------|-------------|-----|-----|-----|-----|-----|-----|-----|
| | | SUC | DIS | | | | | | |
| S | 2x1-7 | 2 | 1 | 151 | 603 | 127 | 330 | 254 | 97 |
| | 3x1.5-7 | 3 | 1.5 | 165 | 615 | 127 | 330 | 254 | 116 |
| | 4x2-7 | 4 | 2 | 167 | 620 | 127 | 330 | 279 | 127 |
| | 6x3-7 | 6 | 3 | 180 | 625 | 127 | 330 | 286 | 141 |
| | 6x4-7 | 6 | 4 | 184 | 619 | 127 | 330 | 267 | 151 |
| | 2x1-9 | 2 | 1 | 174 | 610 | 127 | 330 | 254 | 128 |
| | 3x1.5-9 | 3 | 1.5 | 181 | 613 | 127 | 330 | 260 | 139 |
| | 4x2-9 | 4 | 2 | 190 | 612 | 127 | 330 | 286 | 148 |
| | 6x4-9 | 6 | 4 | 197 | 615 | 127 | 362 | 273 | 186 |
| | 8x6-9 | 8 | 6 | 215 | 693 | 127 | 394 | 330 | 206 |
| T | 2x1-11 | 2 | 1 | 173 | 609 | 127 | 330 | 279 | 145 |
| | 4x2-11 | 4 | 2 | 190 | 680 | 127 | 362 | 318 | 167 |
| | 6x3-11 | 6 | 3 | 181 | 687 | 127 | 362 | 324 | 193 |
| | 6x4-11 | 6 | 4 | 199 | 690 | 127 | 394 | 305 | 209 |
| | 8x6-11 | 8 | 6 | 215 | 689 | 127 | 394 | 330 | 224 |
| | 3x1-13 | 3 | 1 | 204 | 683 | 127 | 362 | 311 | 162 |
| | 3x1.5-13 | 3 | 1.5 | 209 | 684 | 127 | 362 | 311 | 162 |
| | 3x2-13 | 3 | 2 | 213 | 688 | 127 | 362 | 337 | 184 |
| | 6x3-13 | 6 | 3 | 225 | 621 | 127 | 394 | 343 | 217 |
| | 6x4-13 | 6 | 4 | 223 | 694 | 127 | 394 | 330 | 227 |
| L | 8x6-13 | 8 | 6 | 261 | 701 | 178 | 457 | 457 | 264 |
| | 10x8-13 | 10 | 8 | 229 | 698 | 178 | 508 | 343 | 284 |
| | 4x3-16 | 4 | 3 | 225 | 783 | 127 | 457 | 457 | 227 |
| | 6x4-16 | 6 | 4 | 251 | 787 | 127 | 457 | 457 | 253 |
| | 8x6-16 | 8 | 6 | 284 | 787 | 178 | 457 | 457 | 297 |
| | 10x8-16 | 10 | 8 | 286 | 795 | 178 | 508 | 508 | 318 |
| | 12x10-16 | 12 | 10 | 304 | 804 | 178 | 584 | 584 | 347 |

These diagrams are for reference only and subject to change without prior notice. Please consult factory for exact performance curves.

Call for information on the full line of TRUFLO® pumps



7105 Cessna Drive, Greensboro, NC 27409
 Phone: 800-789-1864 • Fax: 336-664-1353
 E-mail: sales@truflo.com • Web: www.truflo.com