



MARCH PUMPS

1819 PICKWICK AVE., GLENVIEW, IL 60026-1306, U.S.A
 PHONE: (847) 729-5300 - FAX: (847) 729-7062
 WWW.MARCHPUMP.COM

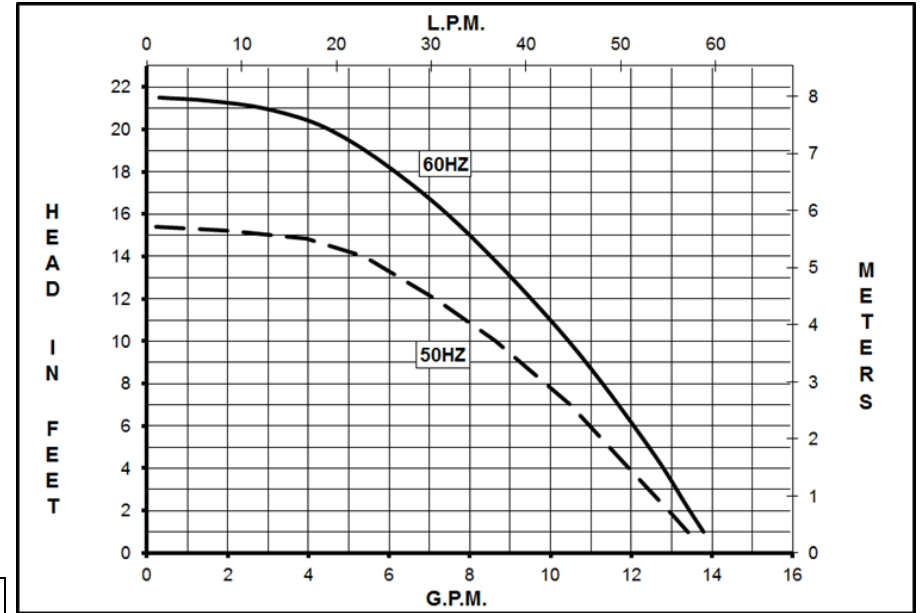
AC-4C-MD, AC-4A-MD, BC-4C-MD, BC-4A-MD

DESCRIPTION: [Series 4 are centrifugal magnetic drive pumps](#), eliminating the need for a shaft seal. Pumps can be serviced with a screwdriver. See the parts list for a breakdown of parts.

OPERATION: Pumps are not self-priming, lack a suction lift, and thus require a **flooded suction**. Pumps **cannot be run dry** because the impeller requires the liquid being pumped for lubrication. For liquids with a specific gravity greater than water, have a higher viscosity, or for elevated temperatures, a trimmed impeller may be necessary. For application assistance, contact March Pump.

ELECTRICAL: AC models have an Air Cooled Motor. BC models have a Blast Cooled Motor and they have an encapsulated impeller magnet. Motors are available in different electrical configurations such as 115 V 50/60 Hz, or 230 V 50/60 Hz, 1 phase. Motors have a 3 ft. (0.9 m) cord. All models have U.L. listed motors, which are rated for continuous duty.

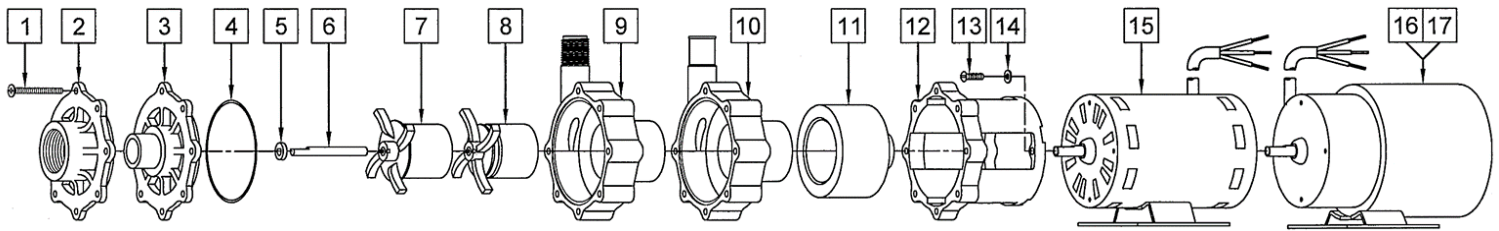
MODEL ABBREVIATIONS: C: Threaded Inlet/Outlet, A: Smooth Inlet/Outlet



Specifications		AC-4C-MD	AC-4A-MD	BC-4C-MD	BC-4A-MD
Product	115V	0145-0010-0100	0145-0052-1000	0145-0010-0400	0145-0048-0200
	230V			0145-0010-0500	0145-0048-0100
Inlet-Outlet		1" FPT-1/2" MPT	1" OD-3/4" OD	1" FPT-1/2" MPT	1" OD-3/4" OD
Max Internal Pressure		50PSI (344 kPa)	50PSI (344 kPa)	50PSI (344kPa)	50PSI (344 kPa)
Max Liquid Temperature		190F (87C)	190F (87C)	190F (87C)	190F (87C)

Model	60Hz											50Hz											Packed Weight Pounds
	Max Flow		Max Head			Electrical						Max Flow		Max Head			Electrical						
	GPM	LPM	FT	PSI	M	Ph	Voltage	AMPS	HP	kW	RPM	GPM	LPM	Feet	PSI	M	Ph	Voltage	AMPS	HP	kW	RPM	
AC-4C-MD	14	53	21.5	9.3	6.55	1	115	1.75	1/12	0.062	3450	13.2	50	15.4	6.7	4.7	1	115	1.75	1/12	0.062	2850	3.65
AC-4A-MD	14	53	21.5	9.3	6.55	1	115	1.75	1/12	0.062	3450	13.2	50	15.4	6.7	4.7	1	115	1.75	1/12	0.062	2850	3.65
BC-4C-MD	14	53	21.5	9.3	6.55	1	115 or 230	1.9 or 0.75	1/10 or 1/12	0.075 or 0.062	3450	13.2	50	15.4	6.7	4.7	1	115 or 230	1.9 or 0.75	1/10 or 1/12	0.075 or 0.062	2850	3.69
BC-4A-MD	14	53	21.5	9.3	6.55	1	115 or 230	1.9 or 0.75	1/10 or 1/12	0.075 or 0.062	3450	13.2	50	15.4	6.7	4.7	1	115 or 230	1.9 or 0.75	1/10 or 1/12	0.075 or 0.062	2850	3.69

All specifications & data are based on pumping water & are intended as a guideline only. Specifications may vary with different motors.



NOTE: When attaching the Drive Magnet to the motor shaft, position the face of the Drive Magnet 1/16 inch below the face of the Motor Bracket.

AC-4C-MD				AC-4A-MD			
Item	Part Number	QTY REQ	Description	Item	Part Number	QTY REQ	Description
1	0150-0021-1000	7	#8-32 x 1-3/4" LG. Screw (Stainless Steel)	1	0150-0021-1000	7	#8-32 x 1-3/4" LG. Screw (Stainless Steel)
2	0150-0032-1000	1	Cover with 1" FPT Inlet (Polypropylene)	3	0150-0150-1000	1	Cover with 1" OD Inlet (Polypropylene)
4	0750-0987-1000	1	0.078" CS x 2.834" ID O-Ring (Buna N)	4	0750-0987-1000	1	0.078" CS x 2.834" ID O-Ring (Buna N)
5	0130-0028-1000	1	Thrust Washer (Ceramic)	5	0130-0028-1000	1	Thrust Washer (Ceramic)
6	0130-0024-1000	1	Shaft (Ceramic)	6	0130-0024-1000	1	Shaft (Ceramic)
8	0145-0011-0100	1	Bare Magnet Impeller (Polypropylene and Magnet)	8	0145-0011-0100	1	Bare Magnet Impeller (Polypropylene and Magnet)
9	0150-0031-0100	1	Rear Housing with 1/2" MPT Outlet and Thrust Washer	10	0150-0159-0100	1	Rear Housing with 3/4" OD Outlet and Thrust Washer
11	0145-0027-0100	1	Drive Magnet	11	0145-0027-0100	1	Drive Magnet
12	0145-0010-1000	1	Motor Bracket (Plastic)	12	0145-0010-1000	1	Motor Bracket (Plastic)
13	0618-0027-1000	4	#8-32 x 5/8 Lg. Screw (Stainless Steel)	13	0618-0027-1000	4	#8-32 x 5/8 Lg. Screw (Stainless Steel)
14	0858-0004-1000	4	#8 Washer Flat (Stainless Steel)	14	0858-0004-1000	4	#8 Washer Flat (Stainless Steel)
15	0145-0012-1000	1	AC Motor, 115V, 50/60Hz	15	0145-0012-1000	1	AC Motor, 115V, 50/60Hz
W	0145-0045-0200	1	Wet End Kit (Items: 1, 2, 4, 5, 6, 8, 9)				
BC-4C-MD				BC-4A-MD			
1	0150-0021-1000	7	#8-32 x 1-3/4" LG. Screw (Stainless Steel)	1	0150-0021-1000	7	#8-32 x 1-3/4" LG. Screw (Stainless Steel)
2	0150-0032-1000	1	Cover with 1" FPT Inlet (Polypropylene)	3	0150-0150-1000	1	Cover with 1" OD Inlet (Polypropylene)
4	0750-0986-1000	1	0.078" CS x 2.834" ID "O" Ring (Viton)	4	0750-0986-1000	1	0.078" CS x 2.834" ID "O" Ring (Viton)
5	0130-0028-1000	1	Thrust Washer (Ceramic)	5	0130-0028-1000	1	Thrust Washer (Ceramic)
6	0130-0024-1000	1	Shaft (Ceramic)	6	0130-0024-1000	1	Shaft (Ceramic)
7	0145-0033-0200	1	Encapsulated Impeller (Polypropylene)	7	0145-0033-0200	1	Encapsulated Impeller (Polypropylene)
9	0150-0031-0100	1	Rear Housing with 1/2" MPT Outlet and Thrust Washer (Polypropylene/Ceramic)	10	0150-0159-0100	1	Rear Housing with 3/4" OD Outlet and Thrust Washer (Polypropylene/Ceramic)
11	0145-0027-0100	1	Drive Magnet	11	0145-0027-0100	1	Drive Magnet
12	0145-0010-1000	1	Motor Bracket (Plastic)	12	0145-0010-1000	1	Motor Bracket (Plastic)
13	0618-0027-1000	4	#8-32 x 5/8 Lg. Screw (Stainless Steel)	13	0618-0027-1000	4	#8-32 x 5/8 Lg. Screw (Stainless Steel)
14	0858-0004-1000	4	#8 Washer Flat (Stainless Steel)	14	0858-0004-1000	4	#8 Washer Flat (Stainless Steel)
16	0145-0035-1000	1	BC Motor, 115V, 50/60Hz	16	0145-0035-1000	1	BC Motor, 115V, 50/60Hz
17	0145-0036-1000	1	BC Motor, 230V, 50/60Hz	17	0145-0036-1000	1	BC Motor, 230V, 50/60Hz
W	0145-0046-0200	1	Wet End Kit (Items: 1, 2, 4, 5, 6, 7, 9)				

NOTE: Contact Factory for other materials and/or parts not listed.

Special voltage motors are available upon special order.

Materials in Contact with Solution: AC: Polypropylene, Ceramic, Buna N, Ceramic Magnet. BC: Polypropylene, Ceramic, Viton

LIMITED WARRANTY: March pumps are guaranteed only against defects in workmanship or materials for a period of one year from date of manufacture pumping water. For the complete warranty and to register online go to www.marchpump.com/warranty-registration