



MARCH PUMPS

1819 PICKWICK AVE., GLENVIEW, IL 60026-1306, U.S.A
 PHONE: (847) 729-5300 - FAX: (847) 729-7062
 WWW.MARCHPUMP.COM

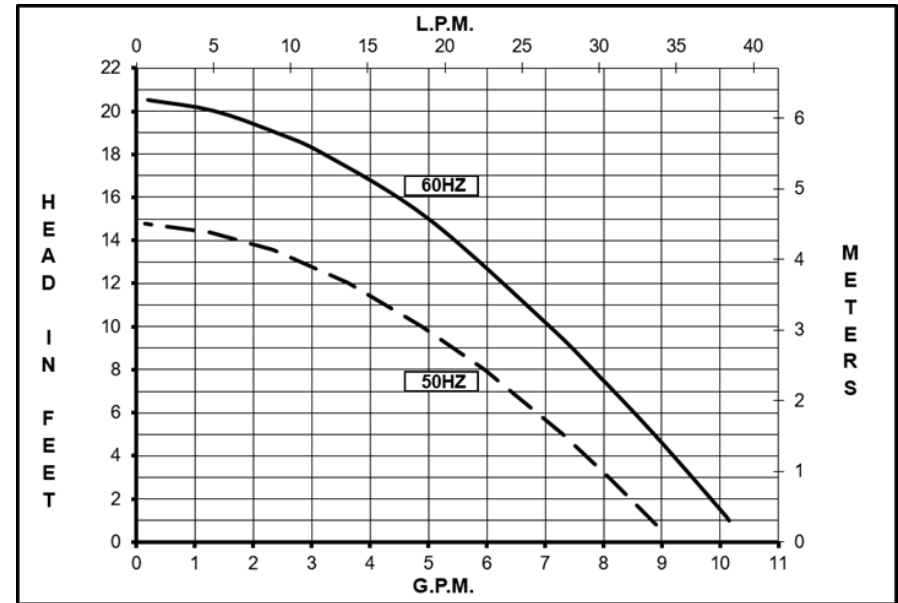
AC-3CP-MD, AC-3AP-MD, BC-3CP-MD, BC-3AP-MD With Broad Ocean Motor

DESCRIPTION: Series 3 are centrifugal magnetic drive pumps, eliminating the need for a shaft seal. Pumps are serviceable with a screwdriver. See the parts list for a breakdown of parts.

OPERATION: Pumps are not self-priming, lack a suction lift, and thus require a **flooded suction**. Pumps **cannot be run dry** because the impeller requires the liquid being pumped for lubrication. For liquids with a specific gravity greater than water, have a higher viscosity, or for elevated temperatures, a trimmed impeller may be necessary. For application assistance, contact March Pump.

ELECTRICAL: Motors are available in different electrical configurations, as 115 Volt 60 Hz or 230 Volt 50/60 Hz, 1 phase. The motors are not dual voltage. The motors are U.L. listed and rated as continuous duty.

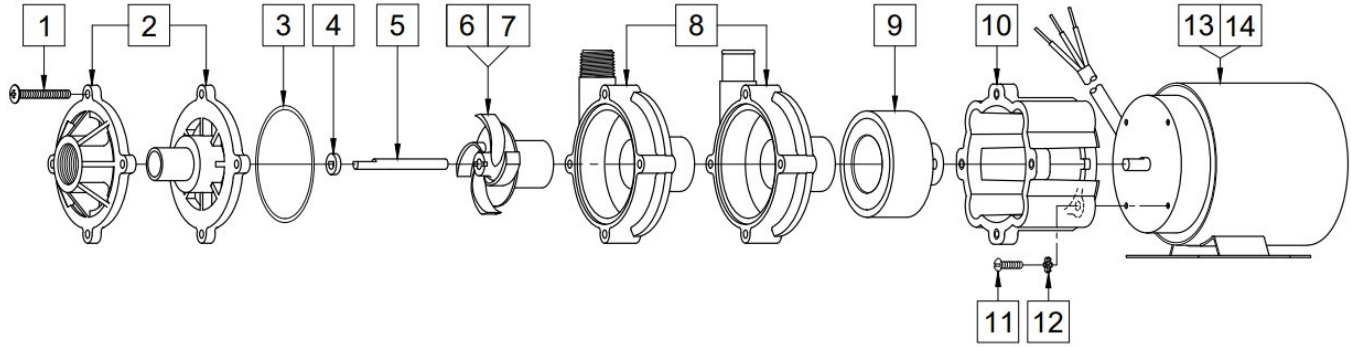
Model Abbreviations: C: Threaded Inlet/Outlet, A: Smooth Inlet/Outlet, AC: Air Cooled Motor, BC: Blast Cooled Motor



Specifications		AC-3CP-MD	AC-3AP-MD	BC-3CP-MD	BC-3AP-MD
Product	115V	0130-0194-0100	0130-0196-0100	0130-0192-0100	0130-0198-0100
	230V	NA	NA	0130-0193-0100	0130-0199-0100
Inlet-Outlet		3/4" FPT- 1/2" MPT	3/4" OD-3/4" OD	3/4" FPT- 1/2" MPT	3/4" OD-3/4" OD
Max Internal Pressure		50PSI (344 kPa)	50PSI (344 kPa)	50PSI (344kPa)	50PSI (344 kPa)
Max Liquid Temperature		190F/87C	190F/87C	190F/87C	190F/87C

Model	60Hz										50Hz									
	Max Flow		Max Head			Electrical					Max Flow		Max Head			Electrical				
	GPM	LPM	FT	PSI	M	Ph	Voltage	AMPS	HP	kW	GPM	LPM	Feet	PSI	M	Ph	Voltage	AMPS	HP	kW
AC-3CP-MD	10	37.8	20.5	8.9	6.25	1	115	1.58	1/10	0.07										
AC-3AP-MD	10	37.8	20.5	8.9	6.25	1	115	1.58	1/10	0.07										
BC-3CP-MD	10	37.8	20.5	8.9	6.25	1	115 or 230	1.58 or 0.68	1/10	0.07	8.7	33	14.7	6.4	4.5	1	230	0.6	1/10	0.07
BC-3AP-MD	10	37.8	20.5	8.9	6.25	1	115 or 230	1.58 or 0.68	1/10	0.07	8.7	33	14.7	6.4	4.5	1	230	0.6	1/10	0.07

All specifications & data are based on pumping water & are intended as a guideline only. Specifications may vary with different motors.



NOTE: When attaching the Drive Magnet to the motor shaft, position the face of the Drive Magnet 3/32 inch below the face of the Motor Bracket.

AC-3CP-MD				AC-3AP-MD			
Item	Part Number	QTY REQ	Description	Item	Part Number	QTY REQ	Description
1	0823-0008-1000	4	#10 Screw x 1-1/2" Long Screw (Stainless)	1	0823-0008-1000	4	#10 Screw x 1-1/2" Long Screw (Stainless)
2	0130-0021-1000	1	Cover with 3/4" FPT Inlet (Polypropylene)	2	0130-0064-1000	1	Cover with 3/4" OD Inlet (Polypropylene)
3	0130-0011-1000	1	3/32"CS x 2-13/16"OD "O" Ring (Buna)	3	0130-0011-1000	1	3/32"CS x 2-13/16"OD "O" Ring (Buna)
4	0130-0028-1000	1	Thrust Washer (Ceramic)	4	0130-0028-1000	1	Thrust Washer (Ceramic)
5	0130-0024-1000	1	Shaft (Ceramic)	5	0130-0024-1000	1	Shaft (Ceramic)
6	0130-0020-0100	1	Impeller with Bare Ceramic Magnet (Polypropylene)	6	0130-0020-0100	1	Impeller with Bare Ceramic Magnet (Polypropylene)
8	0130-0018-1000	1	Rear Housing with 1/2" MPT Outlet (Polypropylene)	8	0130-0102-1000	1	Rear Housing with 3/4" OD Outlet (Polypropylene)
9	0130-0043-0200	1	Drive Magnet	9	0130-0043-0200	1	Drive Magnet
10	0130-0066-0100	1	Motor Bracket (Plastic)	10	0130-0066-0100	1	Motor Bracket (Plastic)
11	0618-0027-1000	4	#8-32 x 5/8" Long Screw (Stainless)	11	0618-0027-1000	4	#8-32 x 5/8" Long Screw (Stainless)
12	0140-0014-1000	4	#8 Lock Washer (Steel)	12	0140-0014-1000	4	#8 Lock Washer (Steel)
13	0130-0187-1000	1	Motor, 115V, 60hz	13	0130-0187-1000	1	Motor, 115V, 60hz
W	0130-0113-0200	1	Wet End Kit (Items: 1, 2, 3, 4, 5, 6, 8)				
BC-3CP-MD				BC-3AP-MD			
1	0823-0008-1000	4	#10 Screw x 1-1/2" Long Screw (Stainless)	1	0823-0008-1000	4	#10 Screw x 1-1/2" Long Screw (Stainless)
2	0130-0021-1000	1	Cover with 3/4" FPT Inlet (Polypropylene)	2	0130-0064-1000	1	Cover with 3/4" OD Inlet (Polypropylene)
3	0130-0033-1000	1	3/32"CS x 2-13/16"OD "O" Ring (Viton)	3	0130-0033-1000	1	3/32"CS x 2-13/16"OD "O" Ring (Viton)
4	0130-0028-1000	1	Thrust Washer (Ceramic)	4	0130-0028-1000	1	Thrust Washer (Ceramic)
5	0130-0024-1000	1	Shaft (Ceramic)	5	0130-0024-1000	1	Shaft (Ceramic)
7	0130-0069-0200	1	Encapsulated Impeller (Polypropylene)	7	0130-0069-0200	1	Encapsulated Impeller (Polypropylene)
8	0130-0018-1000	1	Rear Housing with 1/2" MPT Outlet (Polypropylene)	8	0130-0102-1000	1	Rear Housing with 3/4" OD Outlet (Polypropylene)
9	0130-0043-0200	1	Drive Magnet	9	0130-0043-0200	1	Drive Magnet
10	0130-0066-0100	1	Motor Bracket (Plastic)	10	0130-0066-0100	1	Motor Bracket (Plastic)
11	0618-0027-1000	4	#8-32 x 5/8" Long Screw (Stainless)	11	0618-0027-1000	4	#8-32 x 5/8" Long Screw (Stainless)
12	0140-0014-1000	4	#8 Lock Washer (Steel)	12	0140-0014-1000	4	#8 Lock Washer (Steel)
13	0130-0187-1000	1	Motor, 115V, 50/60Hz	13	0130-0187-1000	1	Motor, 115V, 50/60Hz
14	0130-0188-1000	1	Motor, 230V, 50/60Hz	14	0130-0188-1000	1	Motor, 230V, 50/60Hz
W	0130-0114-0200	1	Wet End Kit (Items: 1, 2, 3, 4, 5, 7, 8)				

NOTE: Contact Factory for other materials and/or parts not listed.

Special voltage motors are available upon special order.

Materials in Contact with Solution: AC: Polypropylene, Ceramic, Buna N, Ceramic Magnet. BC: Polypropylene, Ceramic, Viton

WARRANTY: www.marchpump.com/about/warranty/

For the General Installation Manual, see this link <https://www.marchpump.com/wp-content/uploads/2019/07/march-pump-general-installation-guide-0750-040.pdf>

Or Scan QR Code

