



MARCH PUMPS

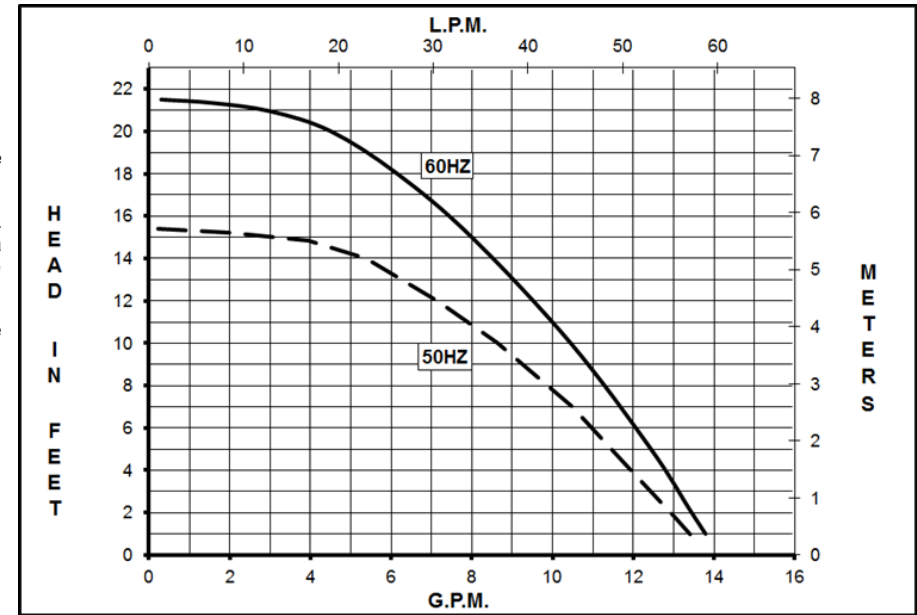
1819 PICKWICK AVE., GLENVIEW, IL 60026-1306, U.S.A
 PHONE: (847) 729-5300 - FAX: (847) 729-7062
 WWW.MARCHPUMP.COM

DESCRIPTION: [Series 4 are centrifugal magnetic drive pumps](#), eliminating the need for a shaft seal. Pumps can be serviced with a screwdriver. See the parts list for a breakdown of parts.

OPERATION: Pumps are not self-priming, lack a suction lift, and thus require a **flooded suction**. Pumps **cannot be run dry** because the impeller requires the liquid being pumped for lubrication. For liquids with a specific gravity greater than water, have a higher viscosity, or for elevated temperatures, a trimmed impeller may be necessary. For application assistance, contact March Pump.

ELECTRICAL: BC models have a Blast Cooled Motor and they have an encapsulated impeller magnet. Motors are available in different electrical configurations such as 115 V 50/60 Hz, or 230 V 50/60 Hz, 1 phase. Motors have a 3 ft. (0.9 m) cord. All models have U.L. listed motors, which are rated for continuous duty.

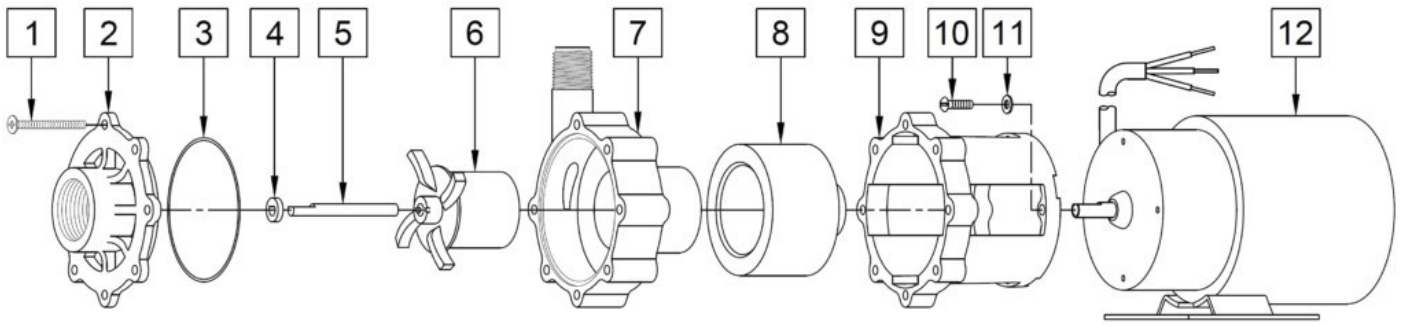
BC-4K-MD



Specifications		BC-4K-MD
Product	115V	0145-0010-0800
	230V	0145-0010-0900
Inlet-Outlet		1" FPT-1/2" MPT
Max Internal Pressure		75PSI (517 kPa)
Max Liquid Temperature		200F (93C)

Model	60Hz											50Hz											Packed Weight Pounds
	Max Flow		Max Head			Electrical						Max Flow		Max Head			Electrical						
	GPM	LPM	FT	PSI	M	Ph	Voltage	AMPS	HP	kW	RPM	GPM	LPM	Feet	PSI	M	Ph	Voltage	AMPS	HP	kW	RPM	
BC-4K-MD	14	53	21.5	9.3	6.55	1	115 or 230	1.9 or 0.75	1/10 or 1/12	0.075 or 0.062	3450	13.2	50	15.4	6.7	4.7	1	115 or 230	1.9 or 0.75	1/10 or 1/12	0.075 or 0.062	2850	3.81

All specifications & data are based on pumping water & are intended as a guideline only. Specifications may vary with different motors.



NOTE: When attaching the Drive Magnet to the motor shaft, position the face of the Drive Magnet 1/16 inch below the face of the Motor Bracket.

BC-4K-MD

Item	Part Number	QTY REQ	Description
1	0150-0021-1000	7	#8-32 x 1-3/4" LG. Screw (Stainless Steel)
2	0150-0124-1000	1	Cover with 1" FPT Inlet (Glass Filled Kynar)
3	0750-0986-1000	1	0.078" CS x 2.834" ID "O" Ring (Viton)
4	0130-0028-1000	1	Thrust Washer (Ceramic)
5	0130-0024-1000	1	Shaft (Ceramic)
6	0145-0039-0200	1	Encapsulated Impeller (Glass Filled Kynar)
7	0150-0123-0100	1	Rear Housing with 1/2" MPT Outlet and Thrust Washer (Glass Filled Kynar/Ceramic)
8	0145-0027-0100	1	Drive Magnet
9	0145-0010-1000	1	Motor Bracket (Plastic)
10	0618-0027-1000	4	#8-32 x 5/8 Lg. Screw (Stainless Steel)
11	0858-0004-1000	4	#8 Washer Flat (Stainless Steel)
12A	0145-0035-1000	1	BC Motor, 115V, 50/60Hz
12B	0145-0036-1000	1	BC Motor, 230V, 50/60Hz

NOTE: Contact Factory for other materials and/or parts not listed.

Special voltage motors are available upon special order.

Materials in Contact with Solution: Glass Filled Kynar, Viton, Ceramic

LIMITED WARRANTY: March pumps are guaranteed only against defects in workmanship or materials for a period of one year from date of manufacture pumping water. For the complete warranty and to register online go to www.marchpump.com/warranty-registration