



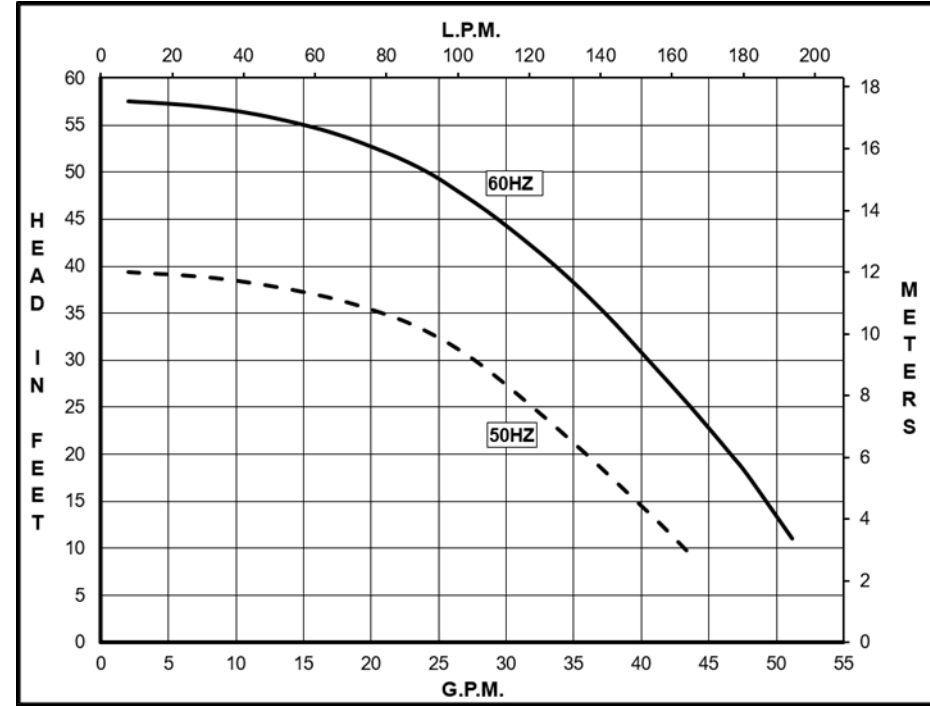
# MARCH PUMPS

1819 PICKWICK AVE., GLENVIEW, IL 60026-1306, U.S.A  
 PHONE: (847) 729-5300 - FAX: (847) 729-7062  
 WWW.MARCHPUMP.COM

**DESCRIPTION & OPERATION:** The March beer pump TE-7SSB-MD is a non-self-priming magnetic drive unit specifically to handle hot wort and water. The unit requires liquid being pumped to lubricate the internal parts. If the pump is run dry for a period of time the impeller and shaft may become damaged. To regulate the flow use a valve on the discharge/outlet.

**ELECTRICAL:** 1 phase 115/230 Volt, 60 Hz, 110/220 Volt, 50 Hz. 3 phase 230/460 Volt, 60 Hz, 190/380 Volt, 50 Hz. Motors are totally enclosed fan cooled and are U.L. listed as well as rated for continuous operation. All motors have a conduit box for electrical connections.

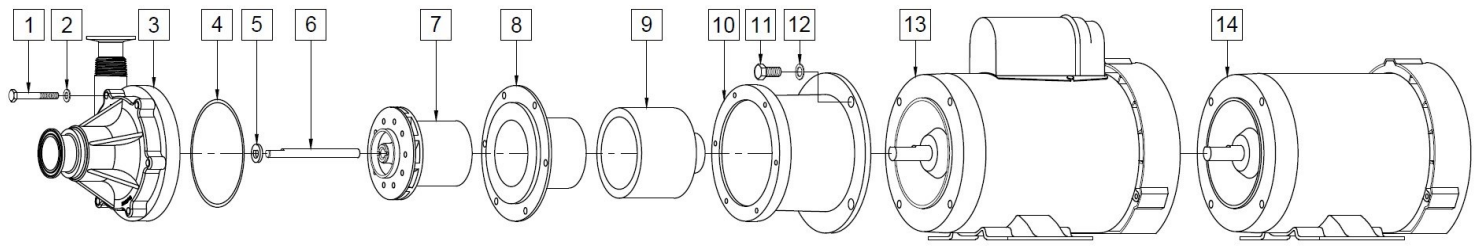
## TE-7SSB-MD With 1-1/2" Sanitary Fittings



Specifications		TE-7SSB-MD
Product	1Ph	0155-0249-0700
	3Ph	0155-0249-0800
Inlet-Outlet		1-1/2"Tri-Clamp-1-1/2"Tri-Clamp
Max Internal Pressure		200PSI (1378 kPa)
Max Liquid Temperature		225F (107C)

Model	60Hz											50Hz											Packed Weight Pounds
	Max Flow		Max Head			Electrical						Max Flow		Max Head			Electrical						
	GPM	LPM	FT	PSI	M	Ph	V	A	HP	kW	RPM	GPM	LPM	Feet	PSI	M	Ph	V	A	HP	kW	RPM	
TE-7SSB-MD	53	201	57.5	24.9	17.5	1	115/230	12.6/6.2	1	0.75	3450	47	180	39.4	17.1	12	1	110/220	14.3/7.1	1	0.75	2850	46.5
TE-7SSB-MD	53	201	57.5	24.9	17.5	3	230/460	3.0/1.5	1	0.75	3450	47	180	39.4	17.1	12	3	190/380	3.3/1.6	1	0.75	2850	42

All specifications & data are based on pumping water & are intended as a guideline only. Specifications may vary with different motors.



**NOTE:** When attaching drive magnet to the motor shaft, position the face of the drive magnet 1/8 inch below the face of the motor bracket.

**TE-7SSBMD**

Item	Part Number	QTY REQ	Description
1	0155-0014-1000	6	1/4"-20 x 2" Lg. Screw (Stainless)
2	0155-0019-1000	6	1/4 ID x 1/2 OD (Stainless)
3	0155-0314-0100	1	Front Housing (316SS)
4	0155-0105-1100	1	1/8" CS x 4-3/8" OD "O" Ring (EPDM)
5	0155-0009-1000	1	Thrust Washer (Ceramic)
6	0155-0081-1000	1	4.257" Lg. Shaft (316SS)
7	0155-0160-0200	1	Impeller with Carbon Bushing (Glass Filled Kynar)
8	0155-0035-0010	1	Rear Housing (316SS)
9	0155-0130-0200	1	Drive Magnet
10	1095-0015-0010	1	Motor Bracket (Aluminum)
11	0155-0017-1000	4	3/8"-16 x 3/4" Lg. Screw (Stainless)
12	0155-0019-1000	4	3/8" ID x 5/8" OD Washer (Stainless)
13	0155-0173-1000	1	1 Phase TEFC Motor 115/230V, 50/60Hz, 1HP
14	0155-0174-1000	1	3Phase TEFC Motor 230/460V, 50/60Hz, 1HP

NOTE: Contact Factory for other materials and/or parts not listed.  
Special voltage motors are available upon special order.

Materials in contact with the liquid:

**TE-7SSB-MD:** 316SS, Glass Filled Kynar, Carbon, Ceramic, EPDM

**LIMITED WARRANTY:** March pumps are guaranteed only against defects in workmanship or materials for a period of one year from date of manufacture pumping water. For the complete warranty and to register online go to [www.marchpump.com/warranty-registration](http://www.marchpump.com/warranty-registration)