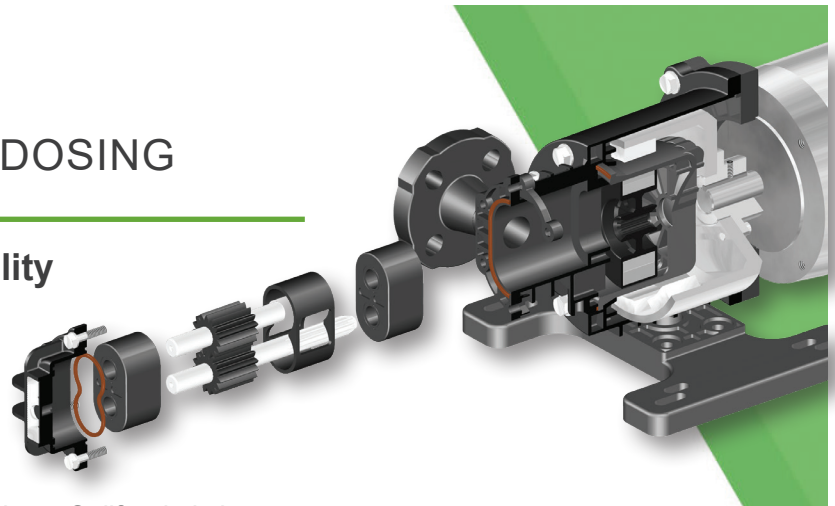


ECLIPSE®

GEAR PUMPS FOR CHEMICAL DOSING

Santa Clara Regional Wastewater Facility San Jose, Calif.

Flo-Line Technology,
Pulsafeeder Authorized Distributor



The Santa Clara Regional Wastewater Facility in Northern California is home to several Eclipse pumps providing chemical dosing to municipal wastewater, effectively handling all the problems associated with both Sodium Hypochlorite and Sodium Bisulfite.

Problematic Chemicals – Sodium Hypochlorite & Sodium Bisulfite

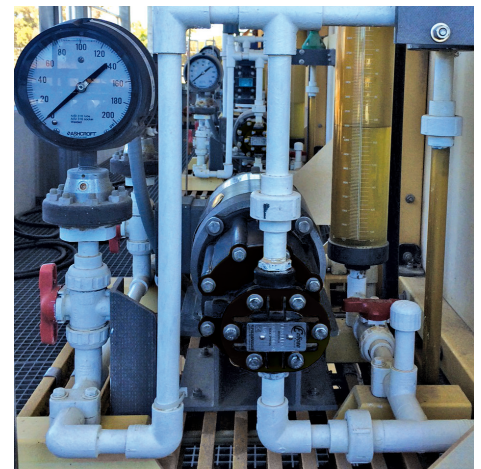
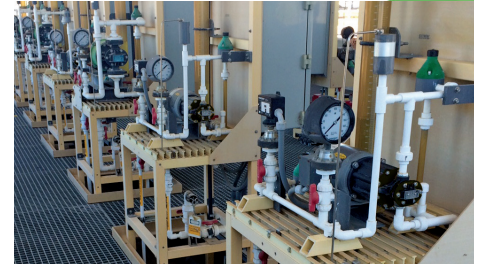
- Sodium Hypochlorite creates off gas which will vapor lock any pump
- Sodium Bisulfite has a tendency to solidify at relatively high temperatures

Eclipse skid systems

- Eclipse Non-metallic construction is capable of handling all of the customer's chemicals
- Keep On Pumping kits (KOPkit®) offer drop-in replacements for wear parts
- Cost and frequency of maintenance is very low

Eclipse for Chemical Dosing

Each Eclipse system is designed with a flow meter providing closed-loop feedback to an induction motor. If a change in flow rate is required, the flow meter communicates to the motor, and the Eclipse reacts instantaneously. The Eclipse pumps were all intentionally sized at 40% of max flow capacity to ensure long life and minimal KOPkit change outs. The plant reports several systems have gone up to five years between KOPkits, a best-in-class for low O&M costs.



Pump Model	Quantity	Chemical Pumped	Flow (gpm)	Max Temp (°F)	Max Working Pressure
E02	1	Sodium Hypochlorite	0.15	150	200
E12	8	Sodium Hypochlorite	1.50 (Varies)		
E12	2	Sodium Bisulfite	1.5		
E25	4	Sodium Bisulfite	1.5		
E75	4	Sodium Hypochlorite	4.5 (Varies)		

Pulsafeeder, Inc.

2883 Brighton Henrietta Town Line Rd.
Rochester, NY 14623
Phone: +1 (585) 292-8000
pulsa@idexcorp.com • pulsa.com

Pulsafeeder is an ISO 9001 Certified Company.

© Copyright 2020 Pulsafeeder. All rights reserved.

Rev: Sept 2020